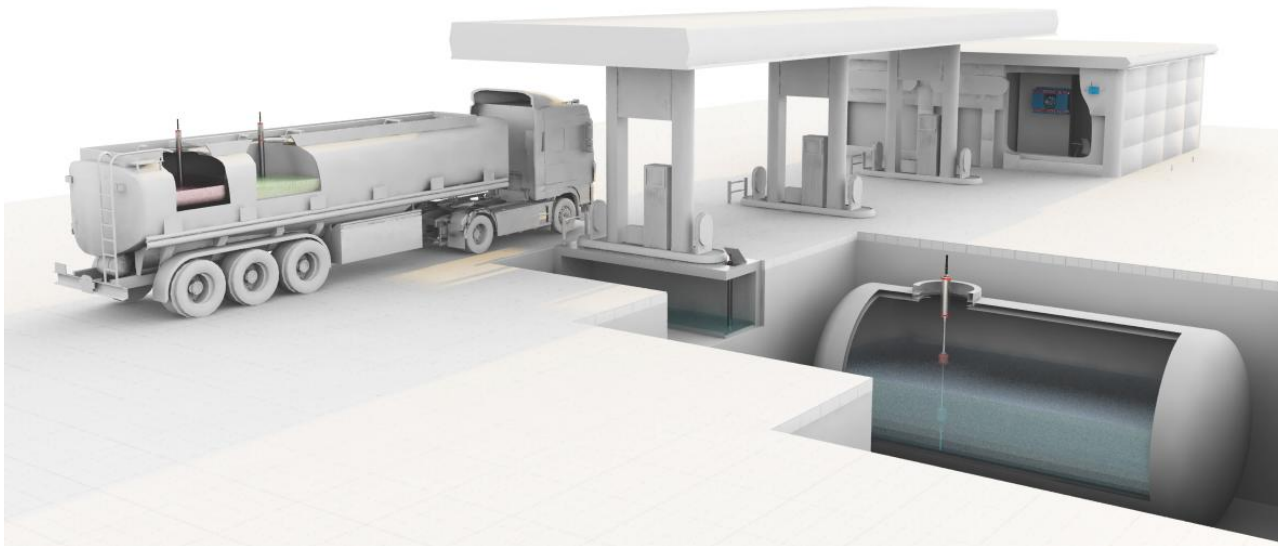


Truck Application



Truck Application



The request of mobile wet stock monitoring solutions increase every day .

The forwarders / oil companies need to check the content of mobile tank in any time :

- To optimize the efficiency of fuel distribution logistics.
- To avoid /reduce theft /fraud problems during the transportation
- To ensure that the fuel loaded at the Depot is completely unloaded at the service station also in case of "ghost stations" without control on site

The versions described on the following pages are valid for wet stock monitoring , complete discharge supervision, but are not developed as measuring system for partial compartment discharge.

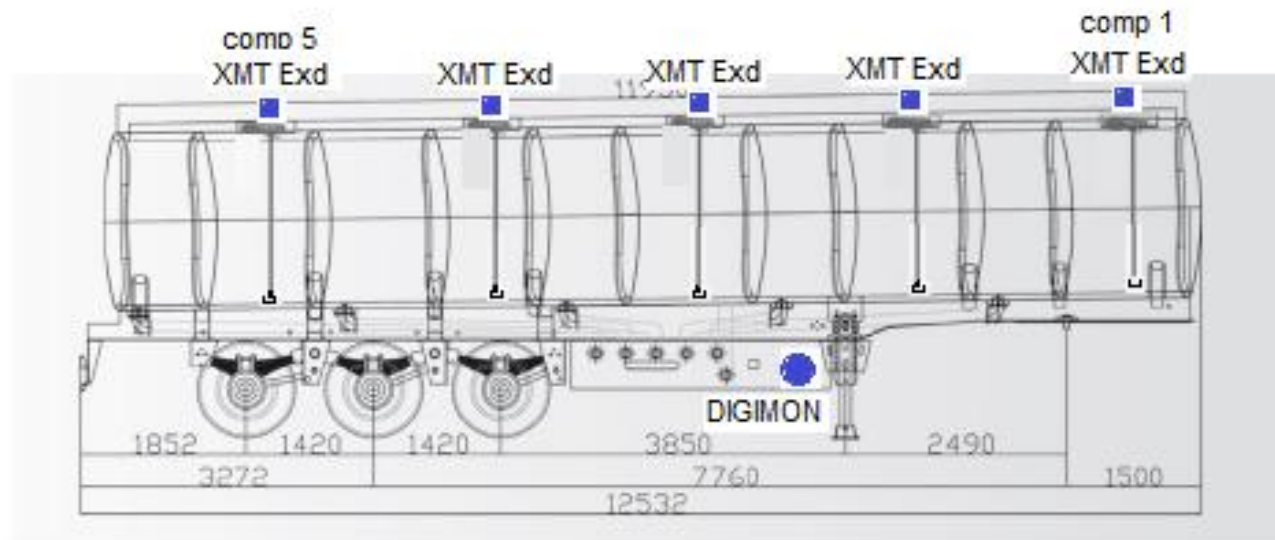
The following Versions 1 to 4 are in order increasing of cost.

It s possible to connect our probes and consoles via RS 485 or 232 to the road tanker data concentrator /transmitter and to view the tank content on specific web platform.
The road tanker data concentrator /transmitter and also the web platform is not a part of Start Italiana supply

Truck Application



VERSION 1



Truck Application



Version 1

1x XMT Exd on each compartment

1x Console Digimon on the load/unload cabinet Zone 1 .

this is possible and unique with Digimon because it is Atex and IP 68

1x compartment tank = Digimon LCD Atex / multiple compartments = Digimon 16 TFT

This version is very simple and cost effective, the driver check the compartments state after loading operation and the customer/service station manager can check it easy before and after the delivery operations without get on the top of the tank to check the optical reference line

Installation remarks :

Power supply of the Digimon and the probes though a 24VDC –DC converter to avoid tension peaks from the truck electric system, this is a general requirement for all electronic devices on the truck.

Fix (not adjustable) upper connection on the manhole cover - See photo 1

Elastic lower anchoring of the probe shaft on the bottom of the compartment, to avoid the bending of the probe. – See photo 2

Truck Application



Version 1 Installation remarks

Photo 1

Fix upper connection

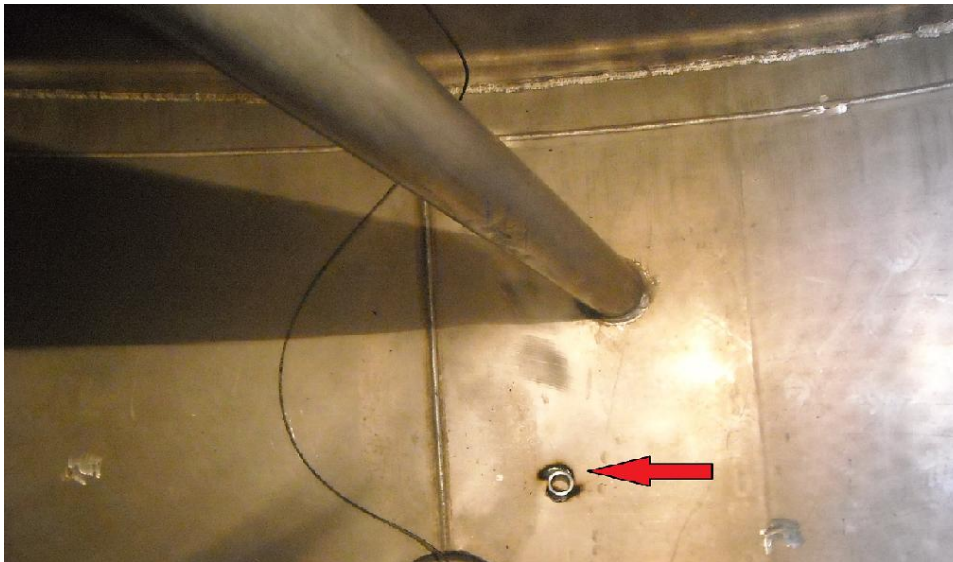


Photo 2

Seat for bottom probe anchoring

Truck Application



Version 2

1x XMT BLACKSEAL SI (Wired) on each compartment

1x Console Digimon on the load/unload cabinet Zone 1

Because Blackseal are Intrinsically Safe probes is mandatory to install I S barrier between the probes and the Digimon

As alternative

1x Console Maglink 16T on the safe area e.g. on the cabine of the truck

The Blackseal probe has the advantage of antiturbolence effect so you can have always stabilized measure

The Blackseal probe is never bent , so the application does not require the anchoring on tank bottom ,this is a great advantage in case of retrofit existing trucks

Truck Application



Version 3

1x BLACK SEAL SI RF (Wire-less) on each compartment
1x Console Digimon on the load/unload cabinet Zone 1
1x RF Receiver on the safe are

The advantage of Blackseal probes are shown on the Version 2 ,
the advantage of the wire-less solution is to avoid cables from the manhole covers on
the top of the tank to the loading/ unloading area on bottom of the tank

Due to continuous product movement on the road tanker the RF probes during the trip
will be always in transmission mode , so is not possible to ensure the battery life.

The wireless solution is also possible with the normal XMT SI RF Version,
in this case the anchoring on tank bottom – see Version 1 is required

